

RECEIVED
LARAMIE COUNTY
CHEYENNE, WY.

CERTIFIED LAND CORNER RECORDATION

'86 FEB 21 PM 3 48

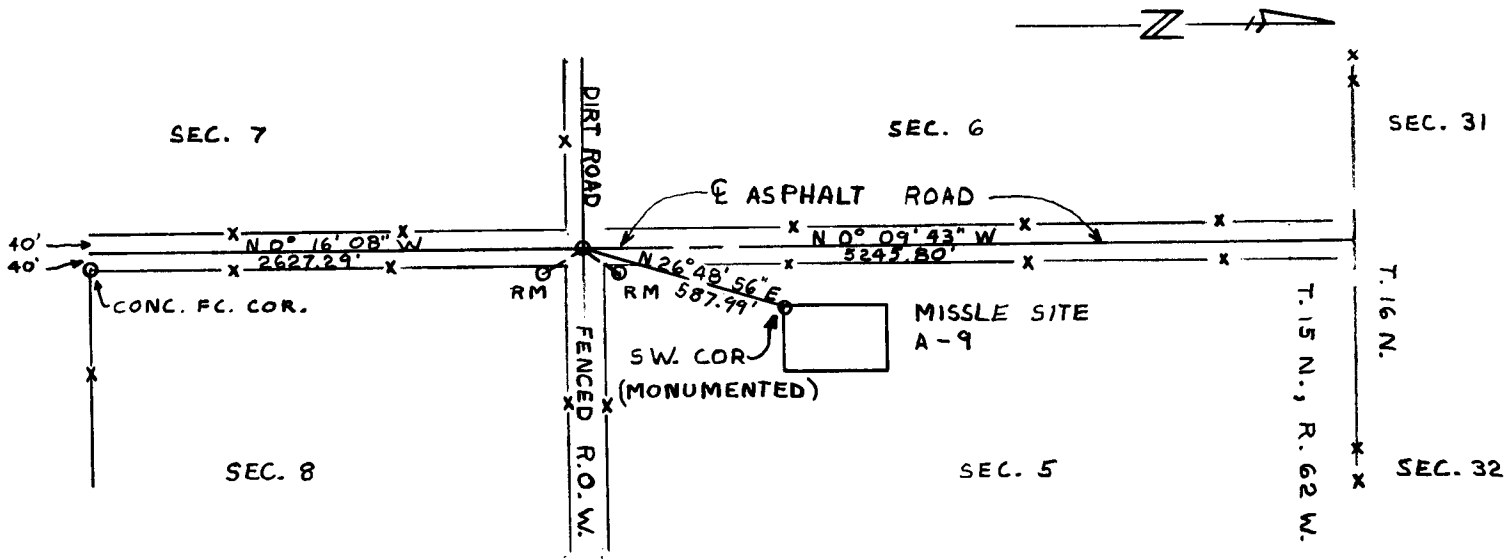
DESCRIPTION OF CORNER EVIDENCE FOUND, AND ORIGINAL RECORD (If known)

The corner of Sections 5, 6, 7, and 8, T.15N., R.62W., 6th P.M., Laramie County, Wyoming, marked by a No. 4 rebar, set 4" below the surface of a asphalt road, on centerline of N.-S. road and fenced R.O.W.'s and on centerline of fenced R.O.W. to East and West.

DESCRIPTION OF MONUMENT AND ACCESSORIES ESTABLISHED TO PERPETUATE THE ORIGINAL LOCATION OF THIS CORNER:

From this corner: Set a reference monument, a No.5 rebar with plastic cap bears N.38°15'42"E., 65.92 feet distant. Set a reference monument, a No. 5 rebar with a plastic cap bears S.40°30'18"E., 61.14 feet distant. The SW corner of Missile Site (A-9) bears N.26°48'56"E., 587.99 feet distant.

SKETCH, WITH COURSE AND DISTANCE TO ADJACENT CORNER IF DETERMINED IN THIS SURVEY. (May Sketch or Paste Reproduction on Reverse Side.)



Bearings determined by Solar Observation

I, Jeffrey D. Youngquist certify that I have carefully performed or reviewed the work done on the diagrammed corner as reported on this recordation form and approve the same.

Jeffrey D. Youngquist Signature of Surveyor
R.L.S. 3515 Registration No.

STATE OF WYOMING,
Office of Clerk and Recorder,
Laramie
County of _____

This "corner record" was filed for record on the 21 day of Feb, 1986, was noted on the cross-index plat and is assigned page No. _____, in book No. _____.

Janet C. Whitehead
County Official

Cross Index No. _____	T. _____	R. _____	Mer. _____
_____	T. _____	R. _____	Mer. _____
_____	T. _____	R. _____	Mer. _____
_____	T. _____	R. _____	Mer. _____
_____	T. _____	R. _____	Mer. _____
_____	T. _____	R. _____	Mer. _____
_____	T. _____	R. _____	Mer. _____